



Tchoban Foundation
Museum für
Architekturzeichnung

Press release

Berlin, 25.12.2022

Aldo Rossi. Insulae

Tchoban Foundation. Museum for Architectural Drawing
Christinenstraße 18a, 10119 Berlin

Exhibition opening on 3 February 2023 at 7 pm

Press tour on 3 February 2023 at 6 pm

Exhibition duration: 4 February 2023 - 14 May 2023

Opening hours: Mon - Fri 2 pm - 7 pm, Sat - Sun 1 pm - 5 pm;

Admission: 6 euros, reduced: 4 euros

The exhibition *Aldo Rossi. Insulae* at the Museum of Architectural Drawing, shown in collaboration with the Fondazione Aldo Rossi in Milan, presents over 110 graphic works and drawings by the renowned Italian architect Aldo Rossi (1931–1997), the majority of which are being shown publicly for the first time.

The title is taken from a series of Rossi's drawings shown in the exhibition from a Latin word *insula* referring to a separately standing house, a method of construction that Rossi often incorporated in his architecture. The exhibition consists of three parts: “Corpus Mediolanensis”, “Insula” and “Works for Berlin”. These three “insulae” seek to show Rossi’s unmistakable signature, including his sense of forms and geometry, his historical references, the influence of antiquity on his work and his frequent poetic references to both architecture and art.

An introduction to the architect's graphic work is provided by the exhibits in the “Corpus Mediolanensis”; consisting of coloured and re-drawn single-prints that Rossi made between 1986 and 1987. With other historical works, they present a survey of 30 years of his architecture and design, with references to more personal aspects of his poetics.

A special role in Rossi's oeuvre is played by “Insula”, a series of drawings inspired by models from antiquity and their reinterpretation by Baroque artists such as Giovanni Battista Piranesi and Claude Lorrain. In complete contrast to the zeitgeist of the 1970s, which animated architects and artists to create a better architecture or even a better society by breaking with the past, Rossi found his models in the buildings of earlier centuries. On this basis, he developed his own architectural language

marked by the characteristic geometrical forms which have been found in architecture since ancient times, such as triangles and cylinders, and which Rossi re-interpreted in his work.

In addition to his native Italy, Berlin played an important part in his career: Rossi designed unique projects for the German capital. Some of these, like the Schützenstraße Quarter, were realised, while others, such as the project for the German Historical Museum, remained on paper.

A catalogue of the exhibition will be published.

Curators of the exhibition:

Chiara Spangaro, Director of Fondazione Aldo Rossi

Nadejda Bartels, Director of Tchoban Foundation

Fondazione Aldo Rossi

The Fondazione Aldo Rossi was founded in 2005 by Vera and Fausto Rossi with the aim of highlighting specific and unknown aspects of Rossi's works. It organises exhibitions and publishes books in collaboration with other international research institutions such as the Bonnefantenmuseum in Maastricht, the Canadian Centre for Architecture in Montreal, Centre Georges Pompidou in Paris, the Deutsches Architekturmuseum in Frankfurt am Main, MAXXI Architettura in Rome, Università IUAV in Venice and the J. Paul Getty Trust in Los Angeles.

Tchoban Foundation. Museum of Architectural Drawing

The Tchoban Foundation's Museum of Architectural Drawing was built in 2013 on the site of the former Pfefferberg Brewery. The Foundation was established in 2009 by the architect Sergei Tchoban to promote the art of architectural drawing. The Museum shows three exhibitions a year, with works from its own collection and loan exhibitions from international partner institutions, including renowned museums such as Sir John Soane's Museum in London, the Albertina in Vienna, the École Nationale Supérieure des Beaux-Arts in Paris and the DAM in Frankfurt am Main.

In cooperation with



Fondazione Aldo Rossi

With the kind support



Media partners:



Contact

Tchoban Foundation. Museum for Architectural Drawing
Christinenstraße 18a, 10119 Berlin

Phone: + 49 30 437 390 90

Fax: +49 30 437 390 92

mail@tchoban-foundation.de

www.tchoban-foundation.de

In case of publication, please send us a copy.

Illustrations

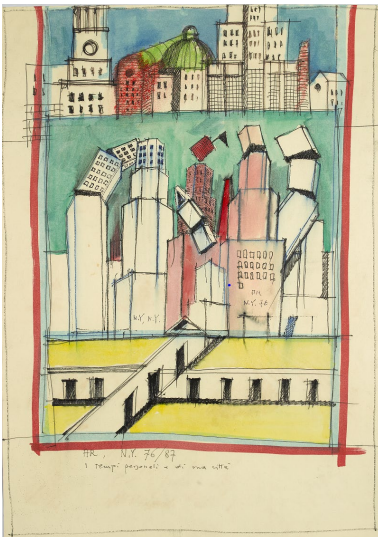


Sunrise on the Giudecca with the Mondo Theatre 81, Venetian frame, 1987.

Watercolour and pastel pencil on offset print

42 x 29.5 cm

Private collection

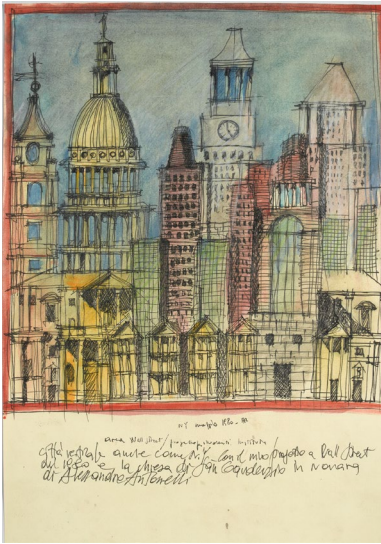


Personal times and those of a city, 1987

Watercolour, felt-tip pen and tempera on offset print

42 x 29.5 cm

Private collection

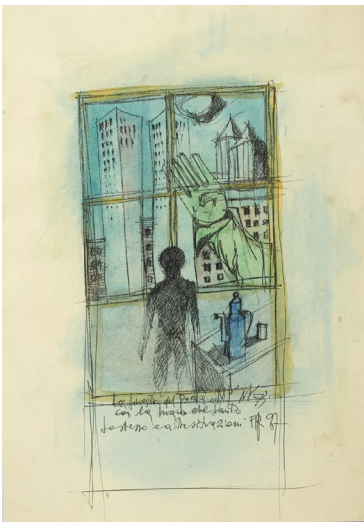


Vertical city also like N. Y. with my project on Wall Street from 1980 and the church of San Gaudenzio in Novara by Alessandro Antonelli, 1987

Watercolour and felt-tip pen on offset print

42 x 29.5 cm

Private collection



The poet's window in N. Y. with the saint's hand, himself and other situations, 1987.

Watercolour, pencil and felt-tip pen on offset print

42 x 29.5 cm

Private collection



The large construction site of Fukuoka, 1987

Watercolour and ink on offset print

42 x 29.5 cm

Private collection

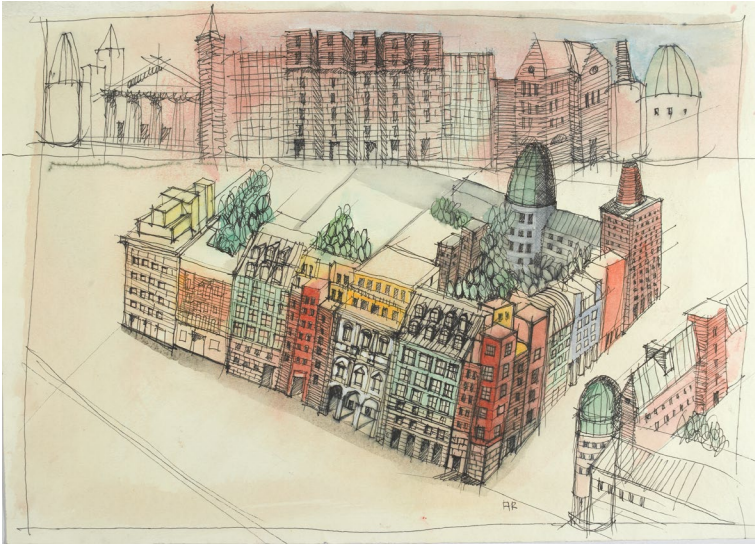


Study for the block in Schützenstraße/ Berlin, 1993

Watercolour and ink on paper

49,6 x 70.5 cm

Private collection

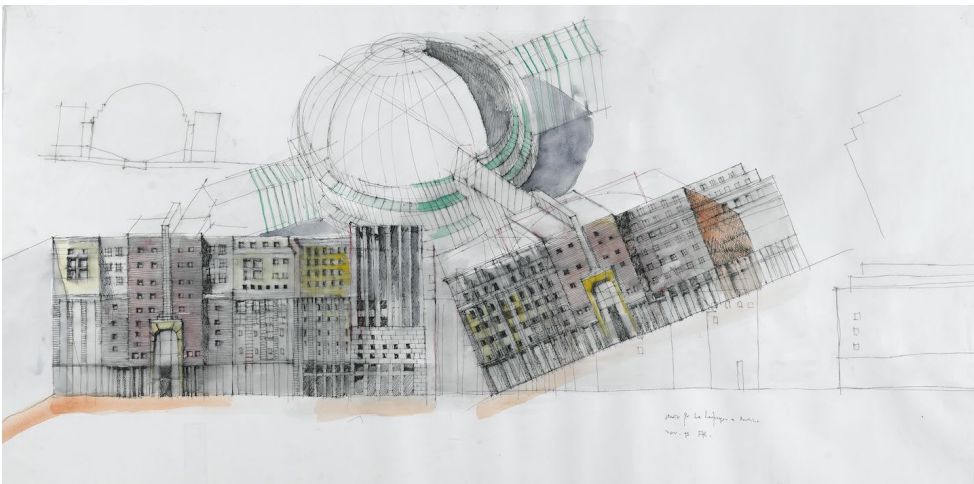


Untitled, undated

Watercolour and ink on paper

36.6 x 50.5 cm

Private collection



Study for Leipziger Str. in Berlin, 1995

Watercolour, ink and felt-tip pen on paper

62 x 124.2 cm

Private collection

Photo credits for all images:

© Eredi Aldo Rossi, courtesy Fondazione Aldo Rossi